



# GAT MONTHLY MEMBERSHIP PROGRESS REPORT

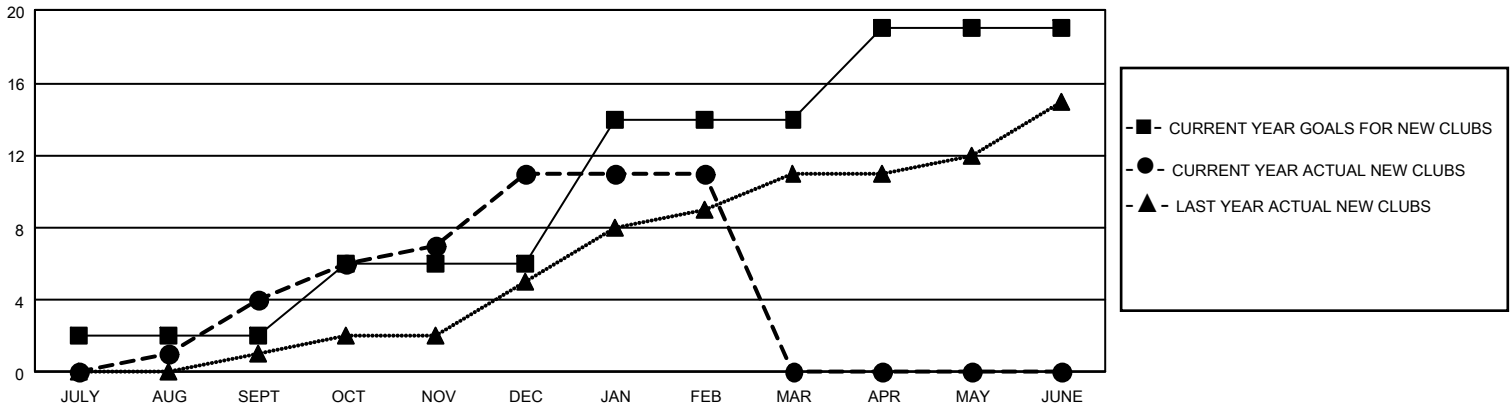
Results as of: 2/28/2021

## GMT Constitutional Area 4, Group C

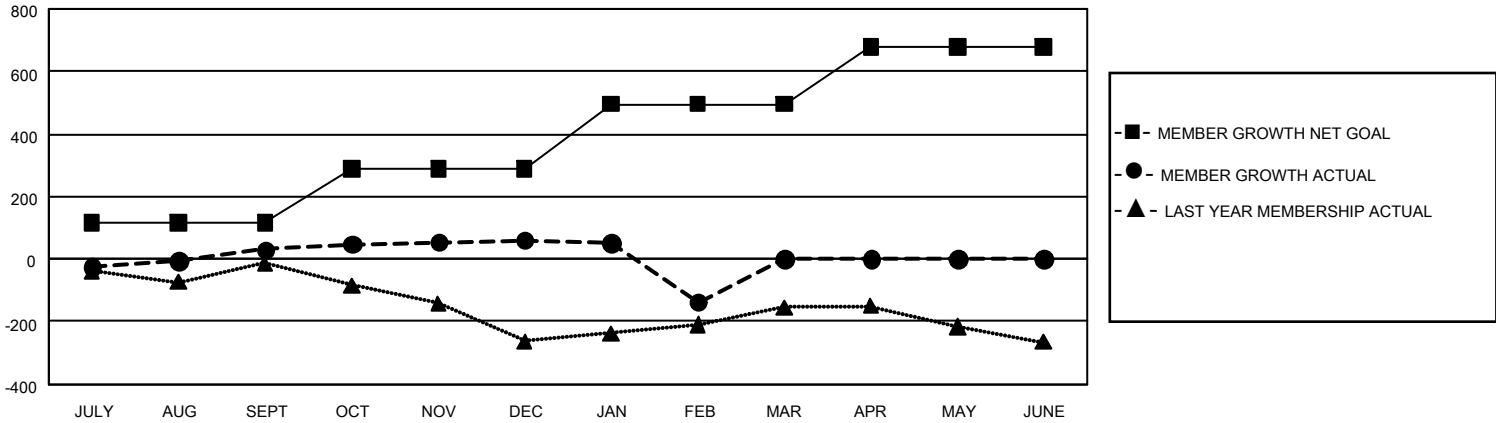
REPORT DOES NOT INCLUDE CLUBS IN UNDISTRICTED AREAS.

| Clubs                 |               |           |               | Members               |                        |                      |  |
|-----------------------|---------------|-----------|---------------|-----------------------|------------------------|----------------------|--|
| RESULTS FOR 2020-2021 |               |           |               | RESULTS FOR 2020-2021 |                        |                      |  |
| QUARTER               | NEW CLUB GOAL | NEW CLUBS | DROPPED CLUBS | QUARTER               | MEMBER GROWTH NET GOAL | MEMBER GROWTH ACTUAL | DROPPED MEMBERS ACTUAL (including transfers) |
| JULY/AUG/SEPT         | 6             | 4         | 1             | JULY/AUG/SEPT         | 116                    | 158                  | 117  |
| OCT/NOV/DEC           | 12            | 7         | 0             | OCT/NOV/DEC           | 172                    | 336                  | 293  |
| JAN/FEB/MAR           | 24            | 0         | 15            | JAN/FEB/MAR           | 208                    | 30                   | 228  |
| APR/MAY/JUNE          | 15            | 0         | 0             | APR/MAY/JUNE          | 183                    | 0                    | 0  |

GOALS AND ACTUAL NEW CLUBS CUMULATIVE



GOALS AND ACTUAL MEMBERS CUMULATIVE



|                          |   |  |                       |
|--------------------------|---|--|-----------------------|
| <b>DROPPED CLUBS: 16</b> | 114 CLUBS OF 465 ADDED 1 OR MORE NEW MEMBERS              | <b>GENDER DISTRIBUTION</b>                 |                       |
|                          |   | MALE 5,005 (55.79%)                        | FEMALE 3,966 (44.21%) |
| <b>DROPPED MEMBERS</b>   |   | <b>TOTAL FAMILY UNIT MEMBERS 1,125</b>     |                       |
| DECEASED 33              | <a href="#">CLICK HERE FOR CUMULATIVE MEMBERSHIP DATA</a> | <b>FAMILY MEMBERS PAYING HALF DUES 676</b> |                       |
| CLUB CANCELLED 181       |   |  |                       |
| OTHER 424                |   |  |                       |
| <b>TOTAL 638</b>         |   |  |                       |